



TSW cutting roller
3.0 m - 6.0 m (10 - 20 ft) working width





Our TREFFLER cutting roller system

Precise cut with 3 rollers

✓ **Precise cut**

A combination of a closed roller bend two ensuing knife rollers folds the plants over and cuts them crosswise.

✓ **Broad application range**

Rape stubble, sunflowers, (frozen) catch crops, grain maize stubble and corn stalk silage are just a few examples of the range of applications for the TREFFLER cutting roller.

✓ **Adapts perfectly to the ground**

Thanks to the first roller guided in the slotted hole and the pendulum-mounted pair of knife rollers, the machine adapts precisely to the ground.

✓ **Excellent driving characteristics**

The steering yoke ensures excellent steering of the front implement, especially at high speeds.

✓ **High area coverage with low fuel requirements**

The TREFFLER cutting roller's passive tools and stable position during work allow working speeds of up to 20km/h.

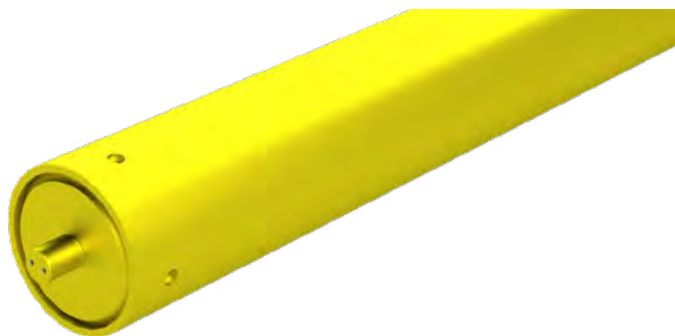
✓ **Sharp blades for long service life**

The blades of the two cutting rollers are made of sharpened, wear-resistant Hardox.

✓ **High ride comfort**

The knives' twisted arrangement means that the cutting roller travels around with ease in the direction of travel so that the knife rollers can cut perfectly even at high speeds.

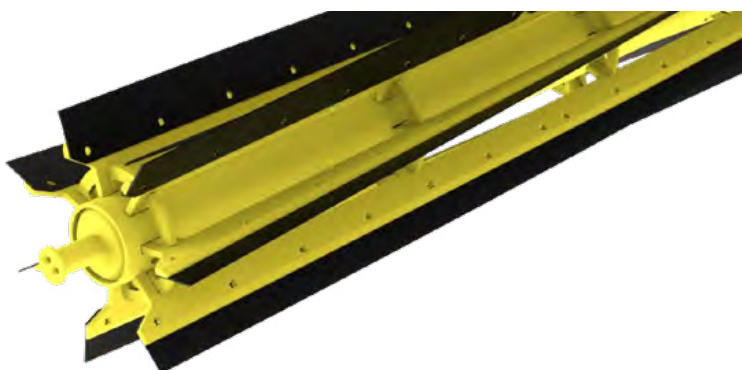
Your perfectly equipped TSW.



Pressure roller

Standard

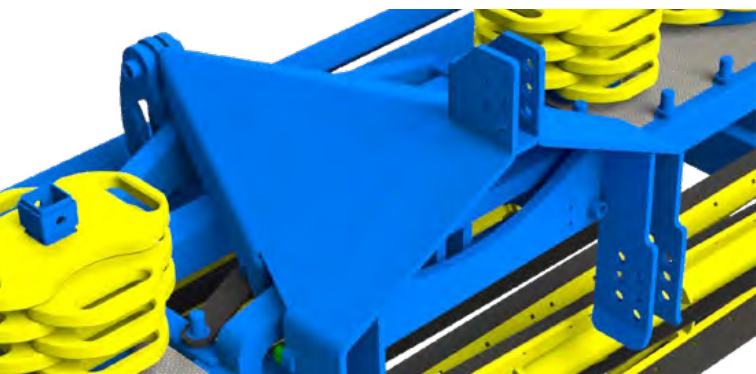
The pressure roller bends over the plants or stubble in the direction of travel. The knife rollers follow to cut the plant residues lengthwise.



Knife roller

Standard

The two rollers use Hardox steel knives to cut at a right angle to the travel direction. The rollers are connected by a chain to keep the gap between cuts constant.



Steering yoke

Optional

A steering yoke is available as an option to support the front implement's steerability, excellent at high driving speeds.



Ballast

Optional

The machine weight can be increased with the optional ballasting of up to 24 weights at 22 kg each. This allows you to adapt the operation to your conditions.

Wide range of applications

The cutting roller in your field.



Stubble management

Cut and crush, for example, rape, silage or grainmaize stubble to rot down for effective field sanitation.



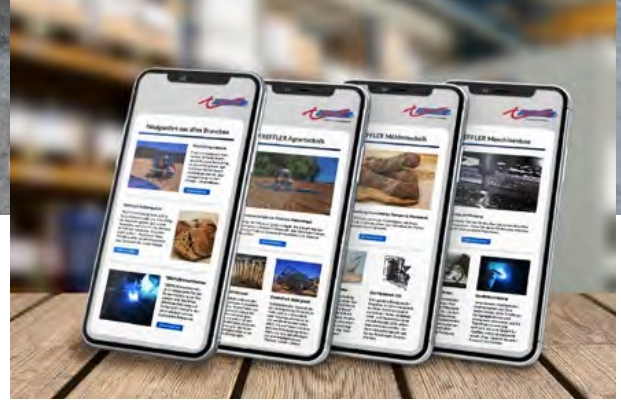
Catch crop management.

Chop frozen catch crops or cut and crush live catch crops efficiently with the TREFFLER cutting roller.

Systems and equipment

TSW technical data

Model	Working width (cm)	Weight (kg/lb)	Transport width (m/ft)	Hydraulic folding	Number of DA valves
TSW 300	280	1300 kg/2866 lb	3.00 m/9'10"	–	–
TSW 600	600	2100 kg/4630 lb	3.00 m/9'10"	✓	1



Our services

Reliable, we are here for you.

Quality only arises together. In the team. From our agricultural or milling technology to distribution or customer service- at TREFFLER we provide you with a wide range of services. One thing that unites us all: your satisfaction as our customers. We look forward to serving you.

- Extensive advice, even after the purchase
- Competent service support, also via e-mail to service@treffler.net
- Service on-site with the TREFFLER service vehicle



The company

Quality and precision, always aiming for a better future.

With tradition comes responsibility. That is why today we are also thinking about tomorrow. We demand a lot- both of ourselves and the quality of our

products- always exploring and creating innovative solutions for even the most complex issues. This defines the culture and the mindset of our company.



GET A GRIP ON YOUR WEEDS. MECHANICALLY.



Your TREFFLER distributor:

TREFFLER ■ **Man@Machine**
OrganicMachinery.net

TREFFLER-Man@Machine B.V.

Ana and Jos Pelgröm
Molenstraat 4
4364 AA Grijpskerke
The Netherlands

T: +31 (0) 6 300 35 123
treffler@manatmachine.com
www.OrganicMachinery.net

TREFFLER Maschinenbau GmbH & Co. KG

Reichersteiner Straße 24
86554 Pöttmes-Echsheim, Germany
Phone: +49 (0) 82 53 / 99 58-0
Fax: +49 (0) 82 53 / 99 58-70

info@treffler.net
www.treffler.net

Dimensions and specifications are approximate and non-binding.
Technical information subject to changes without prior notice.
Copyright © 12/21 TREFFLER Maschinenbau GmbH & Co. KG